

Sullivan County Resiliency Plan

RESILIENT SULLIVAN

MUD Workshop with
thread collective | Urbanomics | eDesign Dynamics | BFJ Planning

1-Mar-2023

AGENDA

A/ INTRODUCTION

- **What is Resiliency?**
- **Resiliency Plan Goals**
- **Expected Outcomes**
- **Consultant Team Introduction**
- **Advisory Committee Introduction**

B/ PROJECT WORK PLAN

- **Timeline**
- **Current Work**
- **Data Collection**
- **Emerging Resiliency Themes**

C/ WORKING SESSION

- **Website Walkthrough**
- **Social Pinpoint**

E/ NEXT STEPS

INTRODUCTION



View from Sullivan County Catskills Source: *Sullivan Catskills Visitors Association*

**WHAT IS
RESILIENCY?**

5,998 people (18.2%) in health care & social assistance industry

Fly fishing in the Upper Delaware River impacted by rising water temperatures

ECONOMIC RESILIENCY supports BUSINESS and PROSPERITY by ensuring stability and diversity of products and services.

Compromised pumpkin harvest this year due to drought

Agriculture, Tourism, Healthcare, etc.



Source: Cochecton Mills



Fly fishing in the Beaverkill

Volatile weather patterns
impacting agriculture ex. irregular
flooding and droughts

Biodiversity priority
areas

ENVIRONMENTAL RESILIENCY
supports NATURAL
INFRASTRUCTURE by protecting
agricultural cycle, biodiversity, and
access to outdoor recreation.

Milkweed corridors for
monarch butterflies

Algal blooms leading to Lake
Superior Beach and other
park closures this summer



Bashakill Wildlife Management Area



Mongaup Pond State campground

Food deserts in Monticello, White Sulphur Springs, and Ferndale

Heat and air quality impacting aging populations with respiratory conditions

SOCIAL RESILIENCY ensures UNINTERRUPTED and EQUAL access to infrastructure for all residents of the County

Power outages due to Hurricane Ida

Access to stable employment



Source: Livingston Manor Central School District

RESILIENT SULLIVAN: PRELIMINARY / DRAFT GOALS

A/

Implementation of strategies to protect biodiversity, natural infrastructure systems, and recreational resources.

B/

Development of model codes and incentives to aid municipalities in responsible, and sustainable development.

C/

Expansion of public transit to ensure equitable access to jobs, amenities, and social services.

RESILIENT SULLIVAN: PLAN OUTCOMES

A/

Foster inter- and intra municipal collaborations.

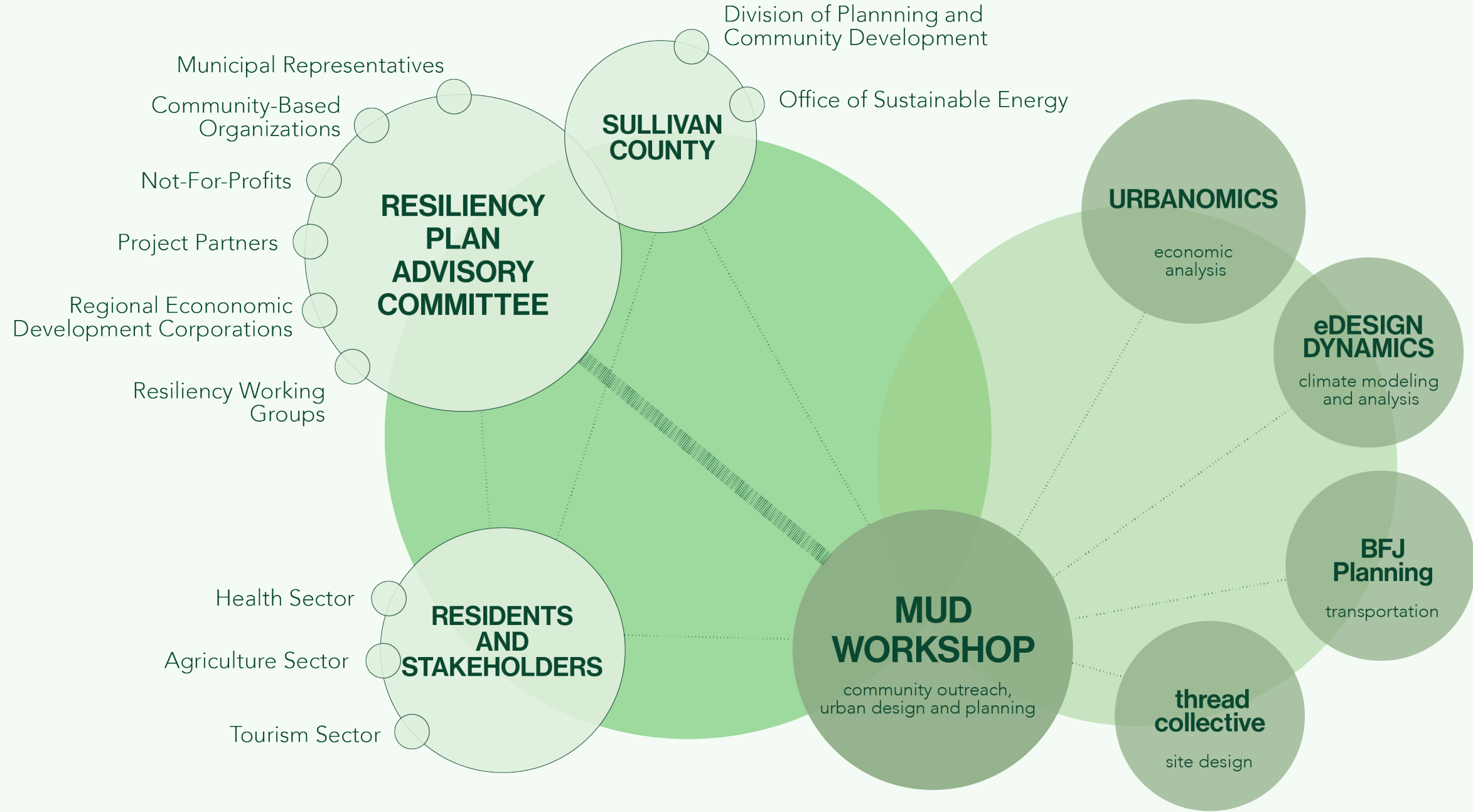
B/

Uphold an agreed upon set of resiliency goals, priorities, and recommendations for the entire county.

C/

Outlines steps for implementing resiliency recommendations, including project/municipal partnerships, funding sources, and short-, medium-, long-term strategies.

TEAM



TIER OF ENGAGEMENT

Engagements Methods

① Direct Community Engagement

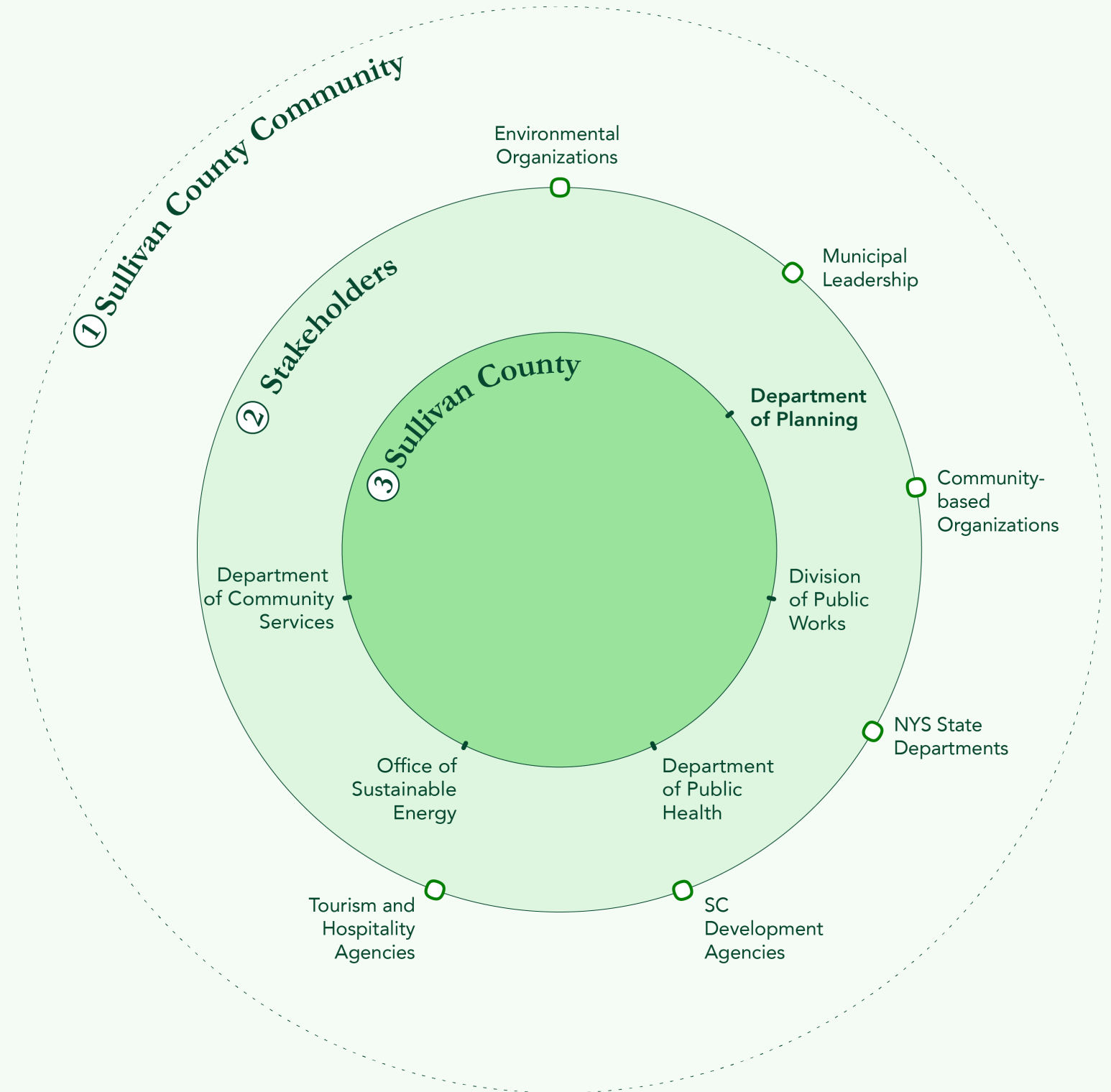
Website
Interactive mapping and survey

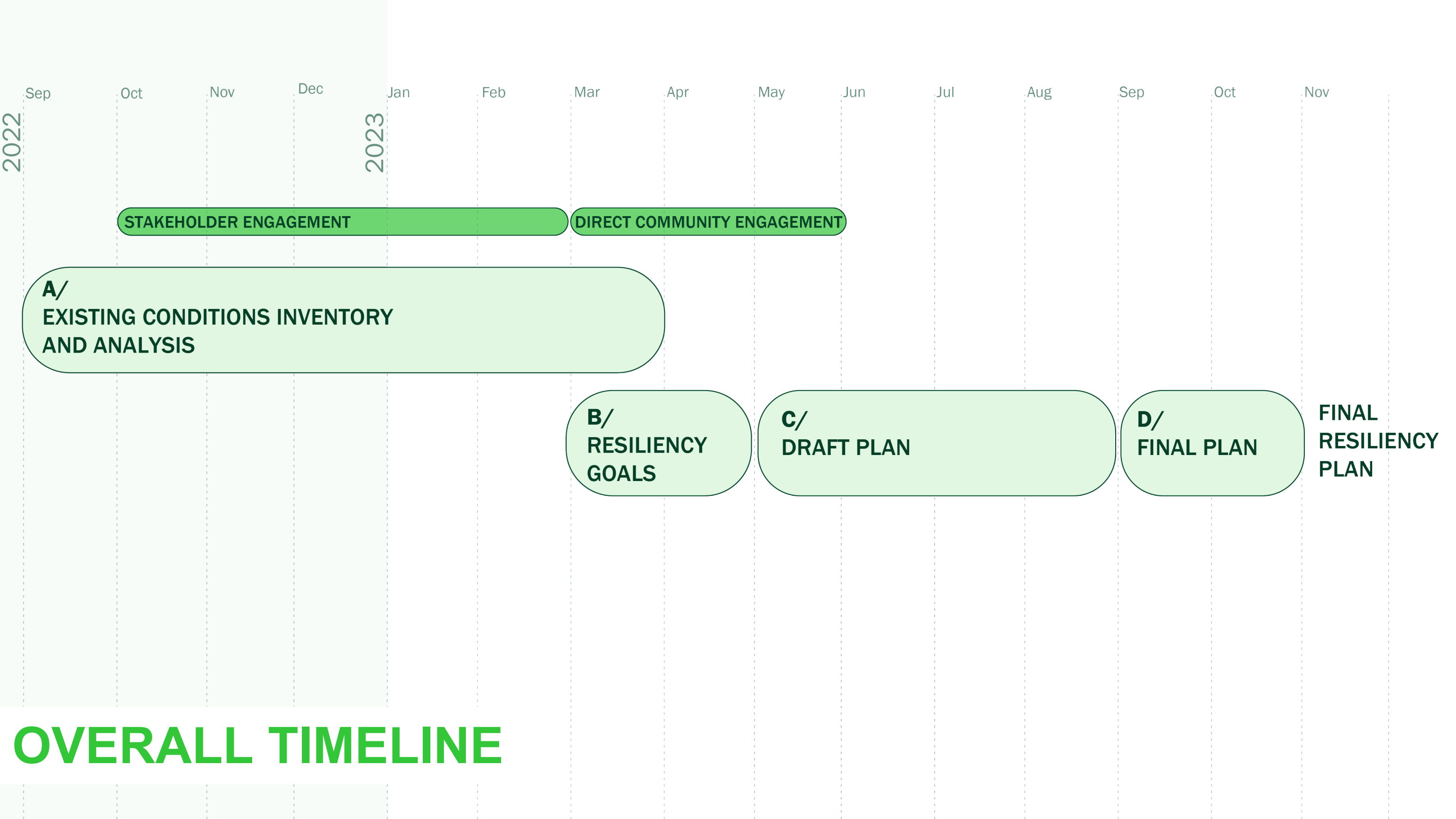
② Stakeholder Engagement

Working sessions
Interviews

③ County Engagement

Meetings
Interviews





OVERALL TIMELINE

Sep Oct Nov Dec Jan Feb Mar Apr May Jun Jul Aug Sep Oct Nov

2022

2023

STAKEHOLDER ENGAGEMENT

DIRECT COMMUNITY ENGAGEMENT

A/
EXISTING CONDITIONS INVENTORY
AND ANALYSIS

B/
RESILIENCY
GOALS

C/
DRAFT PLAN

D/
FINAL PLAN

FINAL
RESILIENCY
PLAN

CURRENT ENGAGEMENTS

1. Kick off with Municipal Leaders
2. Catskill Mountainkeeper
3. Cornell Cooperative
4. Delaware Highlands Conservancy
5. Friends of the Upper Delaware River
6. Sullivan County Chamber of Commerce
7. Sullivan County Industrial Development Agency
8. Sullivan County Office of Sustainable Energy
9. Sullivan County Visitors Association

EMERGING RESILIENCE THEMES

Access to Infrastructure

Impacts on Agriculture

Utilities Resilience

Floods

Others

TELL US YOUR

CONCERNS!

Impacts on Tourism

Access to Jobs

Biodiversity and Ecology

DIGITAL ENGAGEMENT PLATFORM

www.resilientsullivan.com

Interactive Mapping Tool

Drag to
comment >



Economic
Resilience



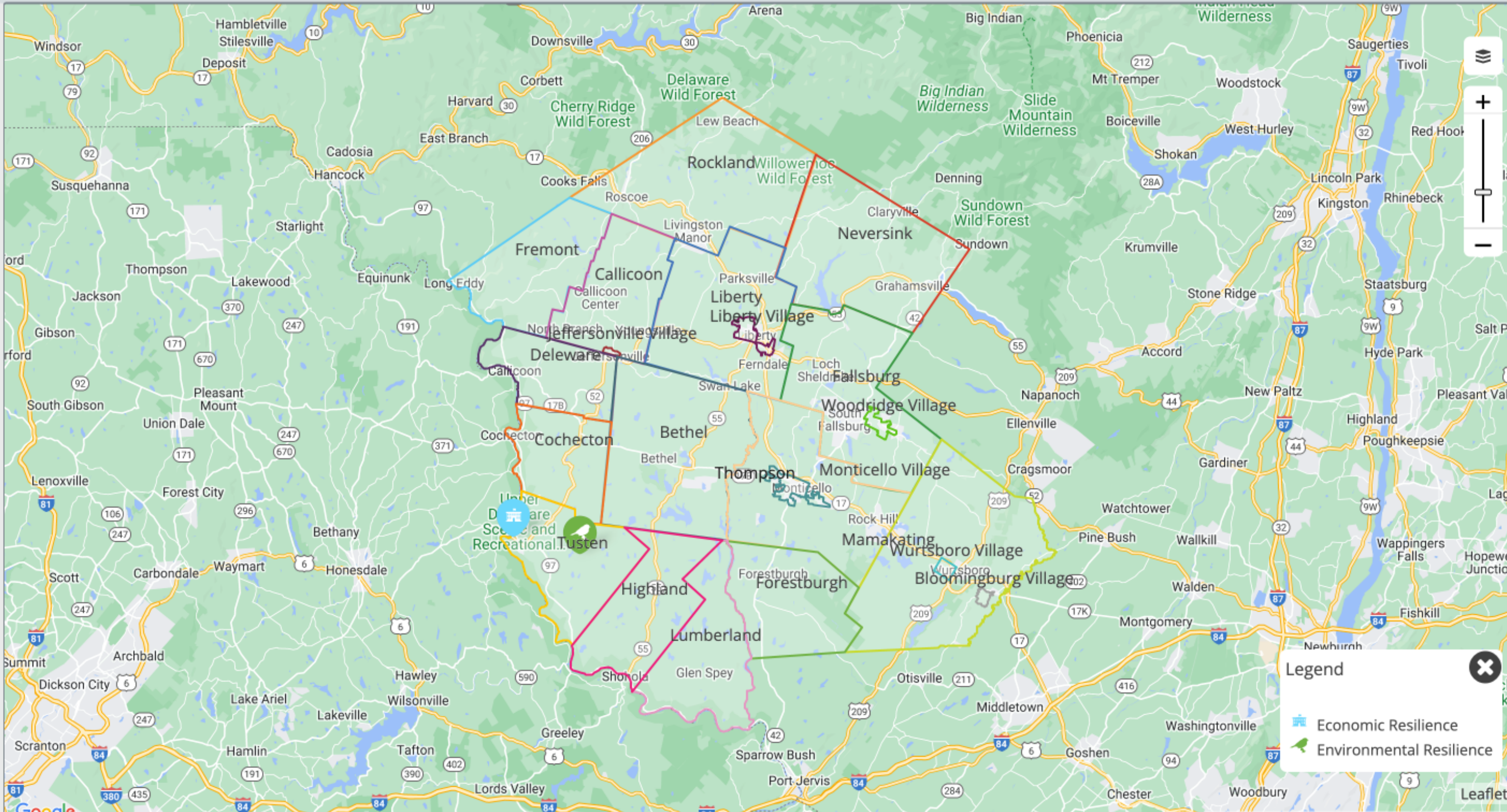
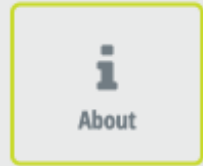
Environmental
Resilience



Social
Resilience



Additional
Thoughts



Legend

- Economic Resilience
- Environmental Resilience




The wetlands of our protected forested land add resiliency in times of severe weather events.

 [Start a discussion](#)



 Zoom in

 16 days ago

