

Conservation, Education, & Partnership

Delaware Highlands Conservancy



Presented by Trey Talley
October 24, 2023

Today's Agenda



- About the Conservancy
- Educational Program
- Land Conservation Program
- Recent Conservation Projects
- Contact Information



About the Conservancy



Who We Are:

- Private, non-profit land trust
- Founded in 1994
- Accredited by the National Land Trust Alliance
- Protected almost 19,000 acres (so far)



Our Mission:

To conserve the forests, farmland, clean waters, and wildlife habitat of the Upper Delaware River region.



NATURAL HABITAT



WORKING FARMS



CLEAN WATERS



HERITAGE



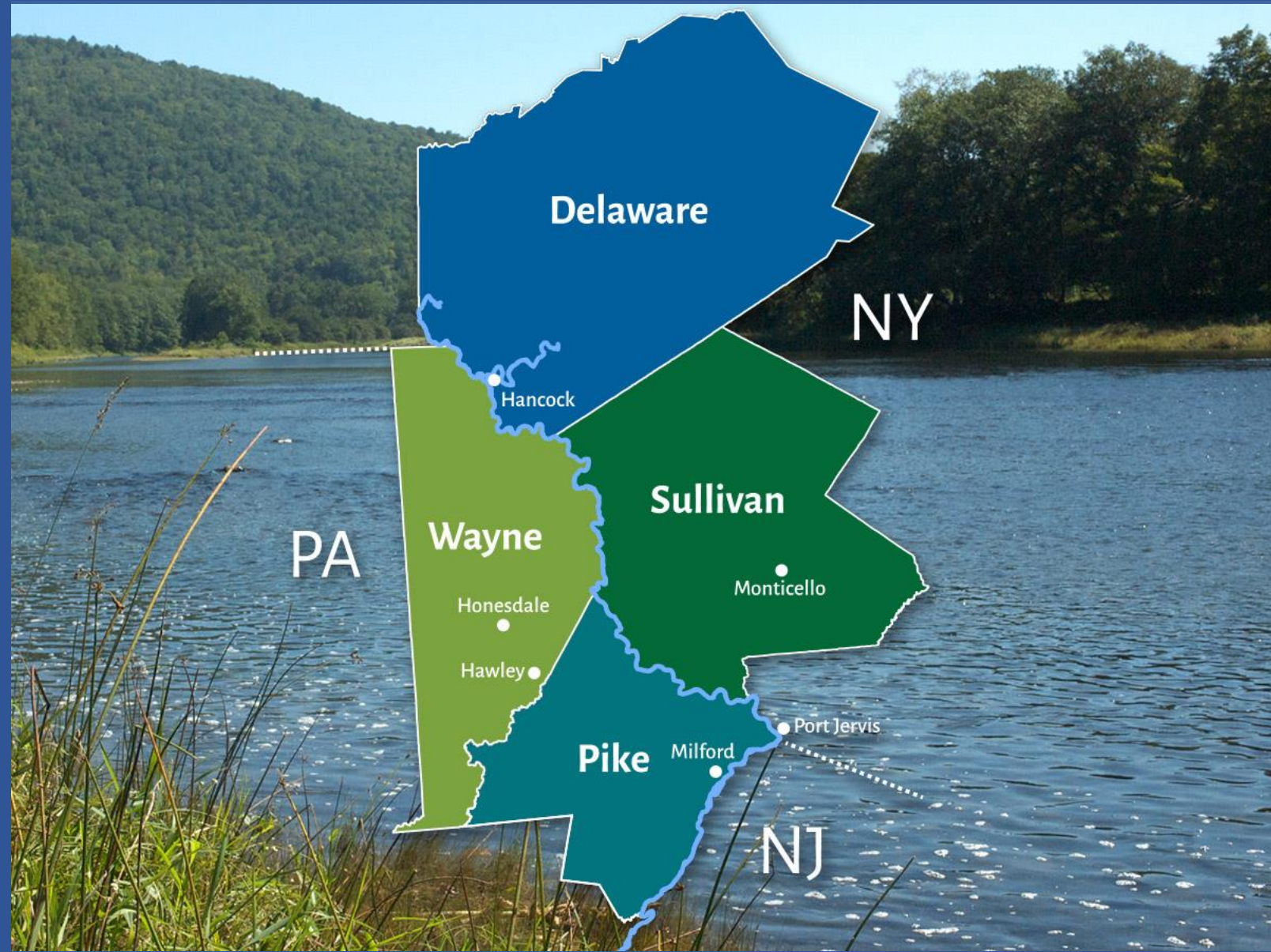
COMMUNITY RECREATION

About the Conservancy



Service area covers four counties in NY & PA

Partner with private organizations as well as local, state, & federal agencies



About the Conservancy



Headquarters at the Van Scott Nature Reserve
in Beach Lake, PA

Seasonal office in Barryville, NY



Van Scott Nature Reserve

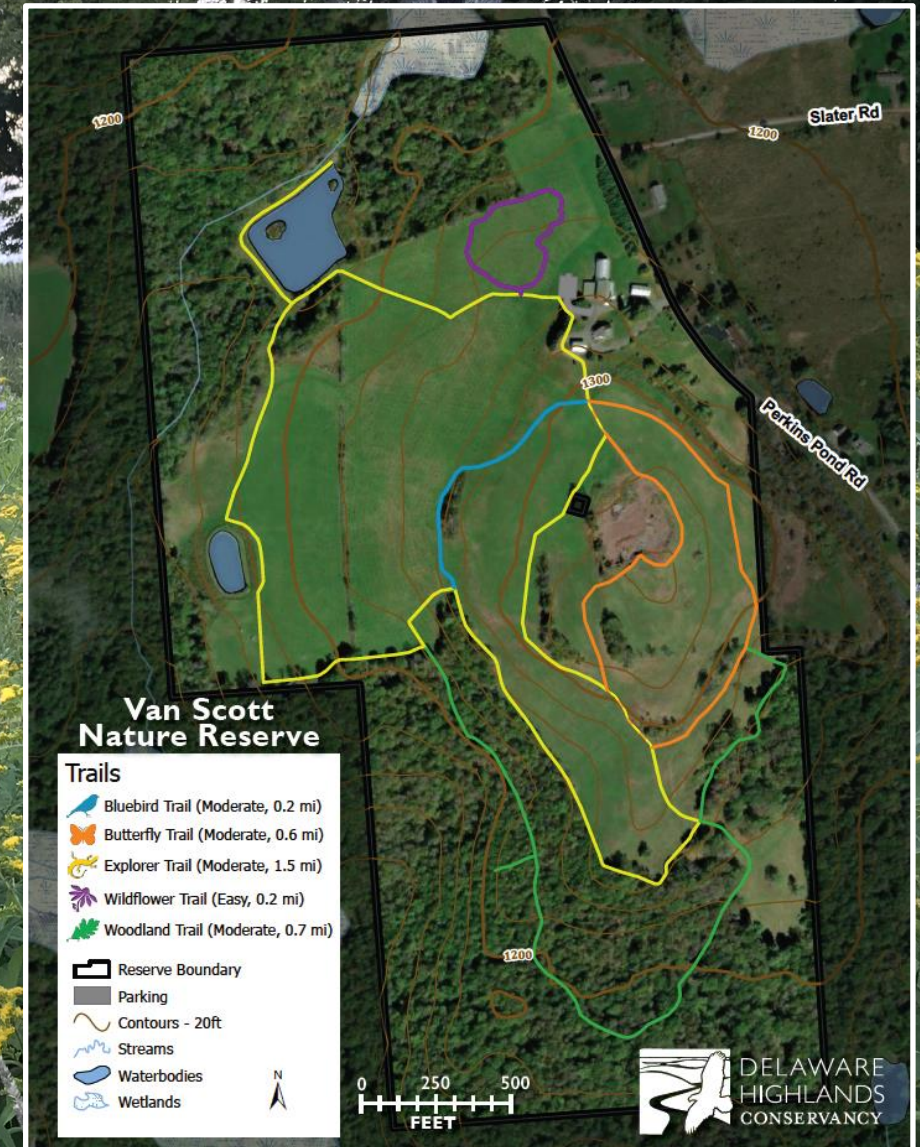


Opened in October 2021, the 144-acre Nature Reserve is open to the public and features over 3 miles of hiking trails.

We offer conservation education programs at VSNR to complement our land conservation efforts, including annual Eagle tours/events.

Location:
571 Perkins Pond Road, Beach Lake PA

DelawareHighlands.org/events



Van Scott Nature Reserve



Vision for the future:

A sustainable and accessible *conservation education center* for citizen scientists of all ages and abilities to learn about conservation, ecology, and sustainability with hands-on activities, modern equipment, and up-to-date resources at the Van Scott Nature Reserve.

DelawareHighlands.org/membership-support

Land Conservation Program



The Conservancy helps private landowners who want to conserve their property through **voluntary conservation easements** that:

- Protect the clean water, natural beauty, and wildlife of the region;
- Maintain connections between habitats;
- Support sustainable agriculture and forestry;
- Contribute to resiliency and vital ecosystem services; and
- Achieve permanent conservation *without removing land from private ownership or requiring public access.*

DelawareHighlands.org/landowner

What is a Conservation Easement?

Conservation
Easements



Restrictions

Reserved Rights

Overview

- Voluntary & legally binding
- Individually tailored to landowner's goals
- Permanent protection of Conservation Values
 - Water Resources
 - Biological Resources
 - Soil Resources
 - Scenic Resources
 - Ecosystem Services

What is a Conservation Easement?



Conservation Easements



Restrictions

Reserved Rights

Overview

- Landowner retains ownership, use, and the ability to sell/bequeath the property
- Easement “runs with the land”
- Conservancy conducts annual monitoring & enforces the terms of the easement
- **Goal:** Balance continued use of the property with meaningful and perpetual protection of the conservation values.

What is a Conservation Easement?

Conservation
Easements

Restrictions

Reserved Rights



General Restrictions

- Development
- Subdivision
- Dumping
- Waterway disturbance
- Mineral/Gas extraction
- Industrial/Commercial use
- Impervious coverage

What is a Conservation Easement?



Conservation Easements

Restrictions

Reserved Rights



Typical Reserved Rights

- Sustainable forestry & agriculture
- Wildlife habitat improvement
- Passive recreation (e.g., hiking, hunting, fishing, etc.)
- Limited/appropriate subdivision
- Renewable energy

What makes a good CE?*



- The landowner *wants* to conserve their land
- > ~20 Acres
- Within our service area
- Agricultural or forest land
- Adjacent to other protected land
- Eagle & other wildlife habitat
- Water resources
- Scenic vistas
- Resilience & ecosystem services
- Conservation contributes to federal, state, and/or local plans

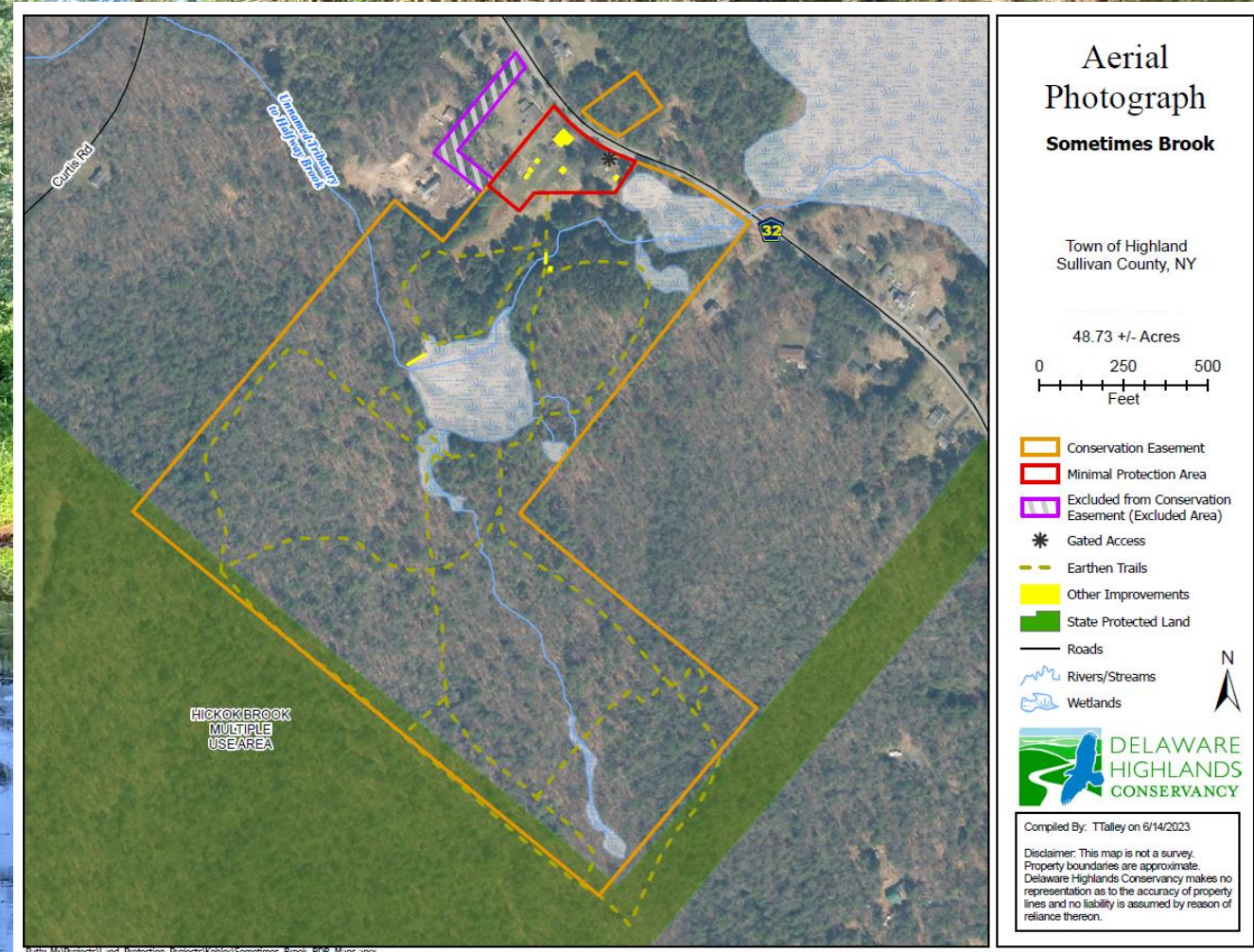
*This list is not exclusive, and properties do not need to have all these characteristics to be a good fit for a CE.

Sometimes Brook CE - 2023

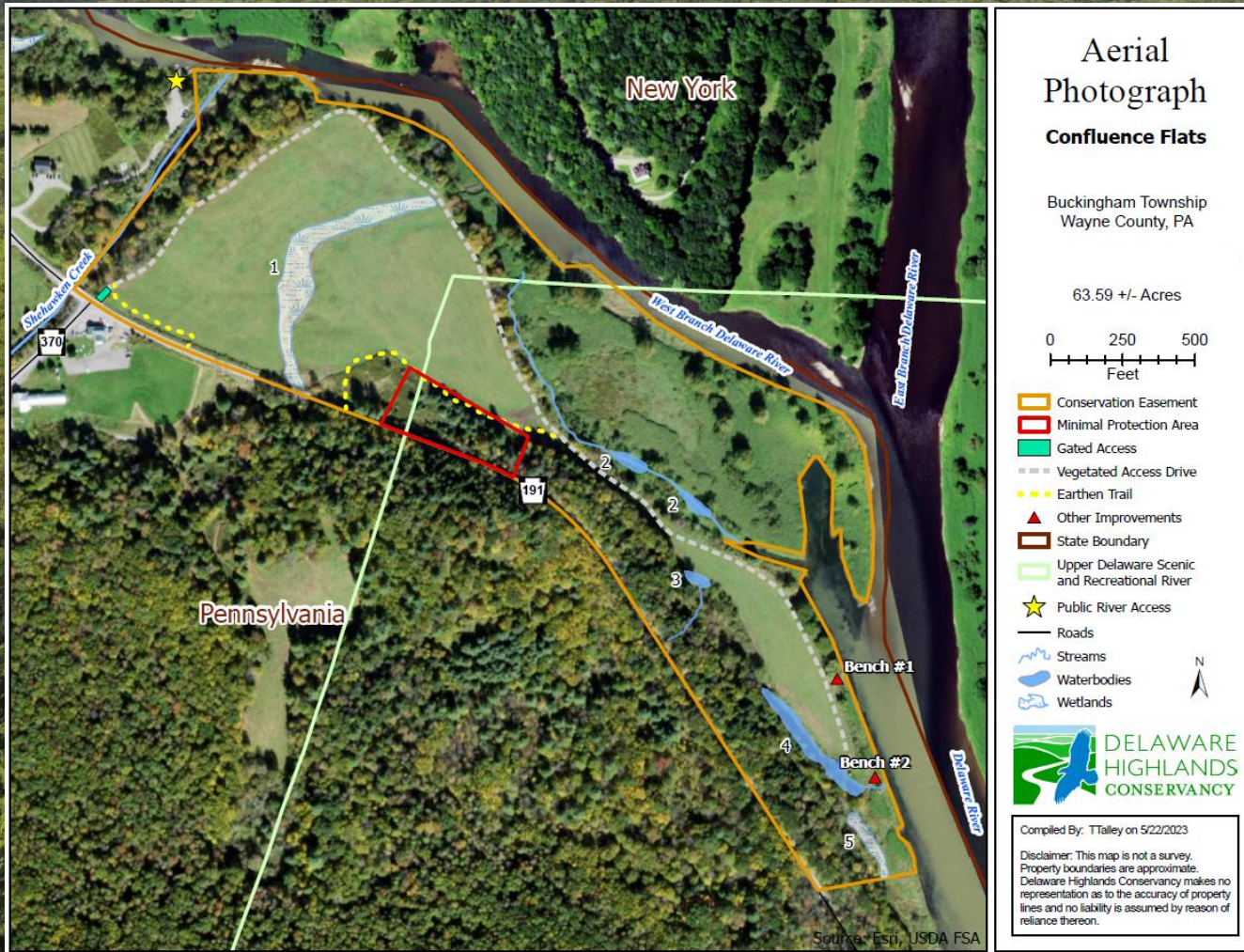


- ~49 acres of forested land adjacent to the Hickok Brook Multiple Use Area.
- Conserved area includes:
 - perennial and intermittent streams
 - significant wetlands
 - multiple seeps and springs
 - ~43 acres of forest
- Combination of private & state funding

“I feel I’ve done as much as I can to put in place a protection for the future. With every year that goes by, there’s less and less land that’s just left alone, and I think it’s important to leave certain things alone. We should really take care of what we have, or else it will be gone.” -Landowner



Confluence Flats CE - 2023



- ~63.5 acres at the confluence of the East and West branches of the Delaware River
- Conserved area includes:
 - ~5,300 feet of frontage on the West Branch and main stem of the Delaware River
 - 935 feet of frontage on Shehawken Creek
 - > 44 acres of 100-year floodplain
 - Over 881 species identified

Questions?



Learn more at: DelawareHighlands.org

Land Protection Contacts:

Trey Talley

Senior Land Protection Coordinator
Trey@DelawareHighlands.org
(570) 226-3164, ext. 7

Kaylan Hubbard

Land Protection Coordinator
Kaylan@DelawareHighlands.org
(570) 226-3164, ext. 3

Education and Events Contact:

Rachel Morrow

Education & Volunteer Coordinator
Rachel@DelawareHighlands.org
(570) 226-3164, ext. 2