
Upper Delaware River Culvert Assessment and Replacement Project



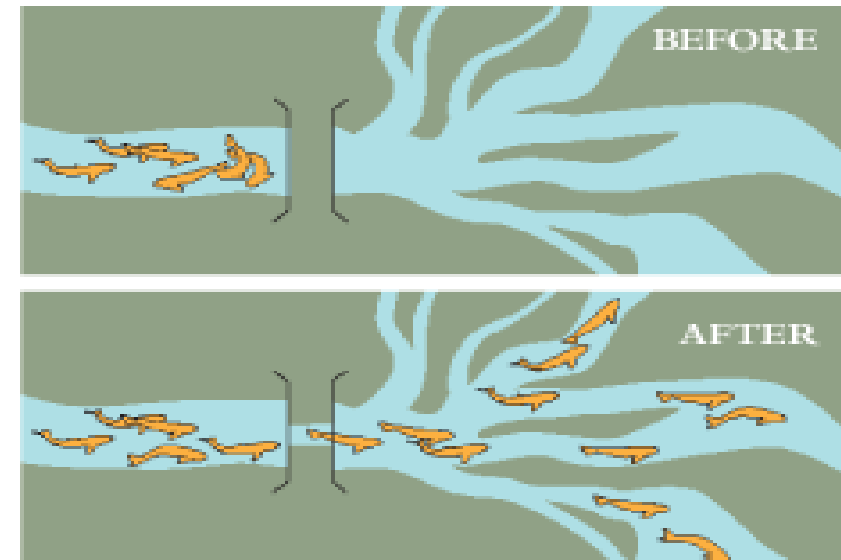
Reconnecting Habitat For Community and Ecosystem Resiliency



Communities need safe and resilient road infrastructure.



Trout and other aquatic organisms need connected stream to thrive and to complete their life cycle.



Focus on Road Stream Crossing Management and Improvement meets both goals!

Culvert Prioritization and Replacement Project



Project Partners and our roles:

- Trout Unlimited – survey, prioritization, grant management, designs and construction
- US Fish and Wildlife Service – project design support, permitting
- NYS Department of Conservation Region 4 – project prioritization, monitoring, permitting and project implementation support
- Friends of the Upper Delaware River – grant management, community outreach and landowner coordination
- Delaware County Soil and Water Conservation District – project engineering and design review support
- Town of Colchester, Deposit and Hancock; Village of Deposit and Hancock – project oversight and prioritization

Project Methods



Survey

Model

Prioritize

Implement

NAACC Assessment



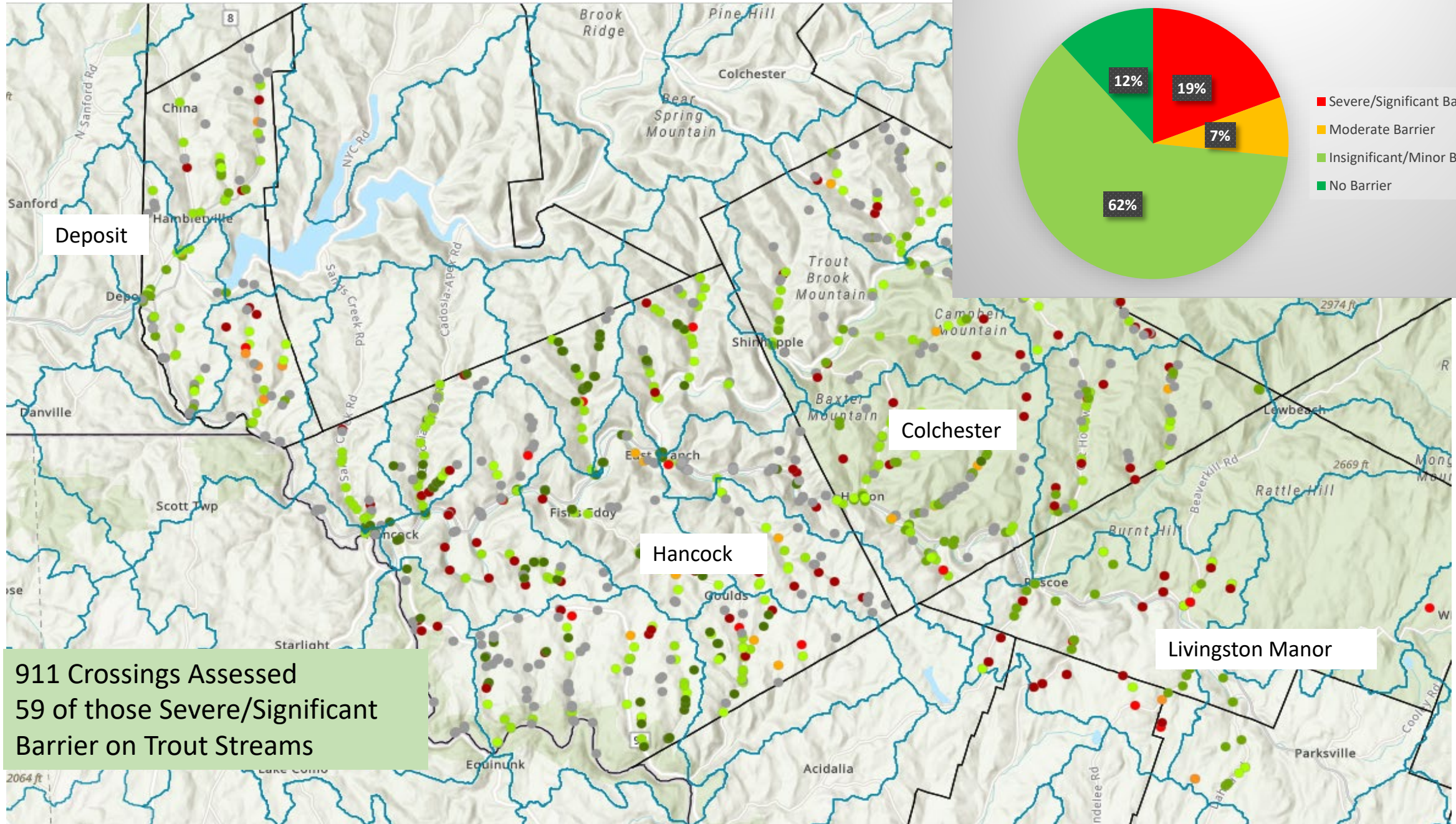
- Observations of the crossing
 - road type
 - flow condition
 - crossing alignment
- Observations of the structure
 - material
 - inlet and outlet shape
 - dimensions
 - Condition
- Scoring
 - Full AOP, reduced AOP, No AOP



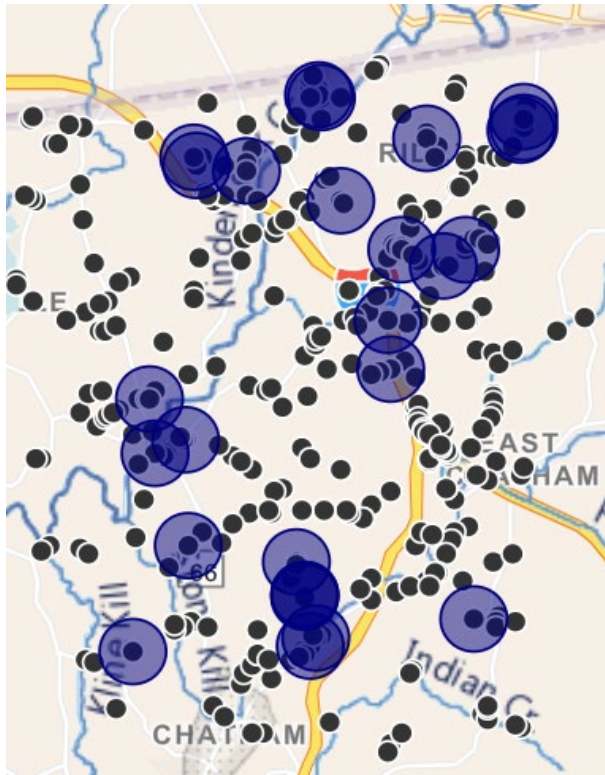
Equipment: stadia rod, measuring tape, level, camera, safety vests and data sheets

Trout Unlimited UDR Barrier Assessment Results

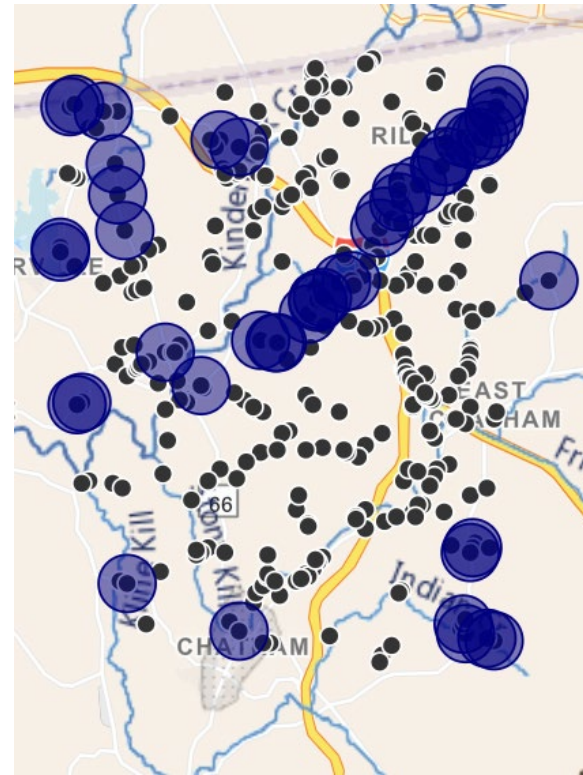
UDR Barrier Assessment Results



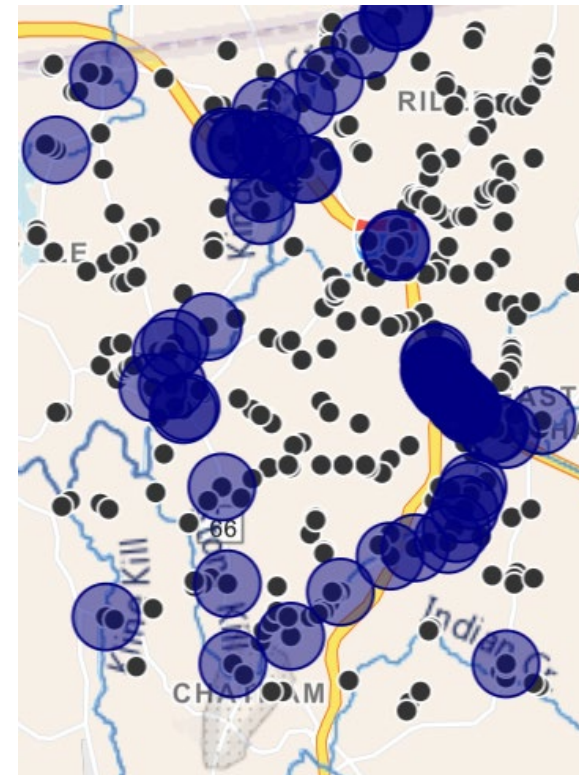
Focusing on Local Infrastructure



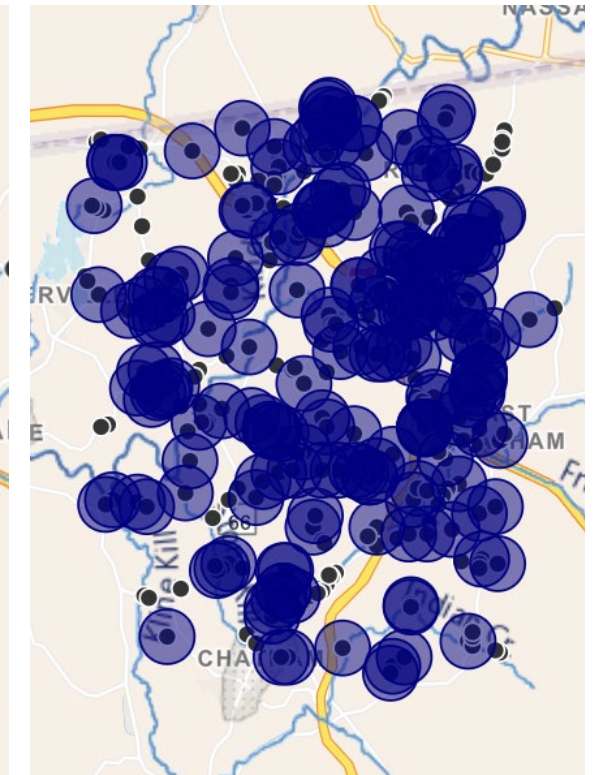
County Ownership
9 % of Total Crossings



Private Ownership
18 % of Total Crossings



State Ownership
20% of Total Crossings



Town Ownership
53% of Total Crossings

Working with Local Towns



The Town Reality

Lots of Road Miles

Lots of Road Stream Crossings

Not a Lot of Budget for Replacements

Every Town is different!

How we can Help

Collect and Digest the Data

Help Identify Priorities

Develop Road Stream Crossing Plans to help for Future Planning

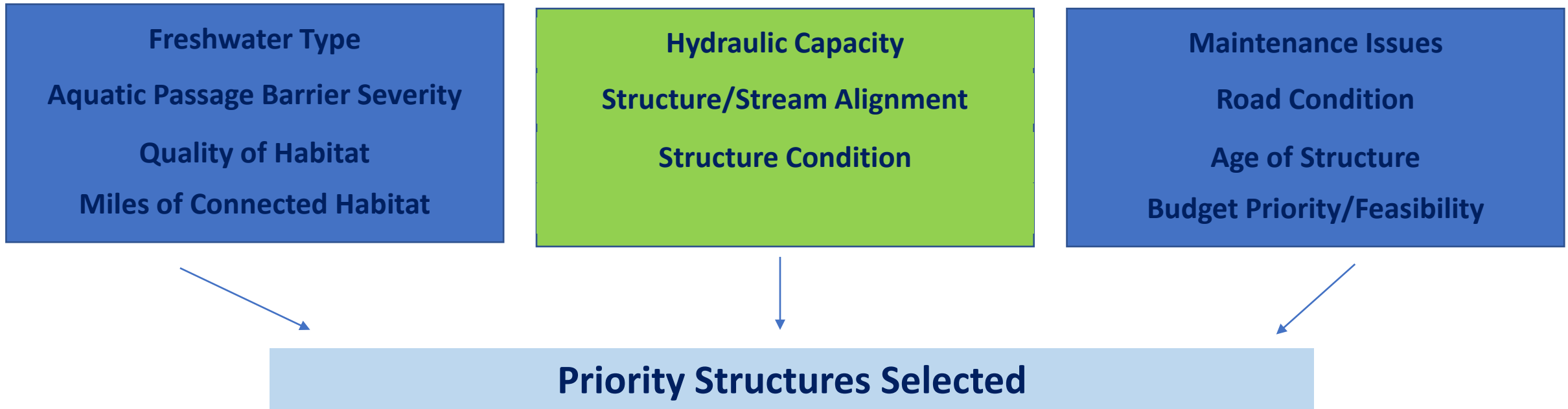
Work Closely with the Towns to determine how we can help

Design Structures that are suitable to Town Budgets and Resources

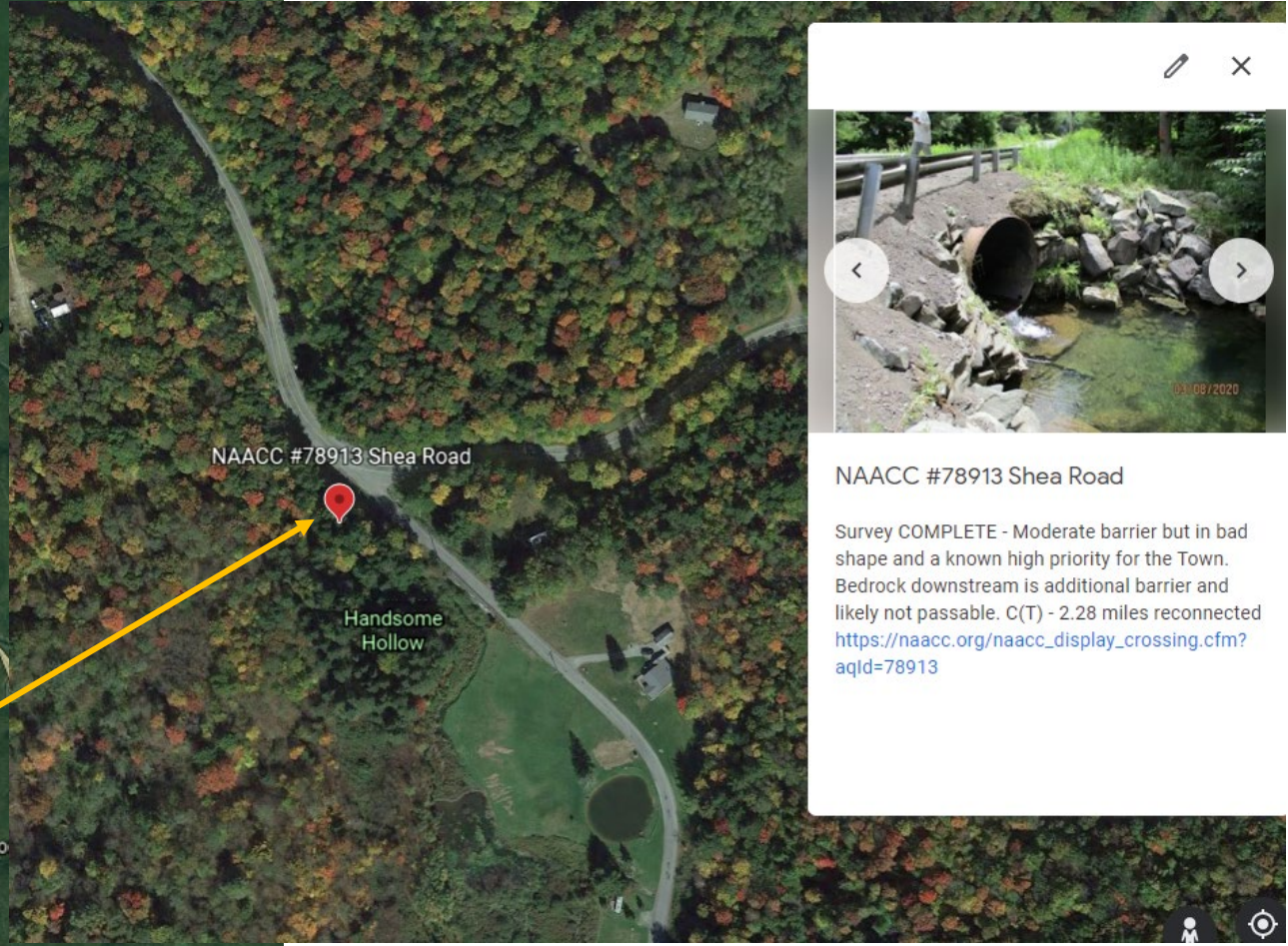
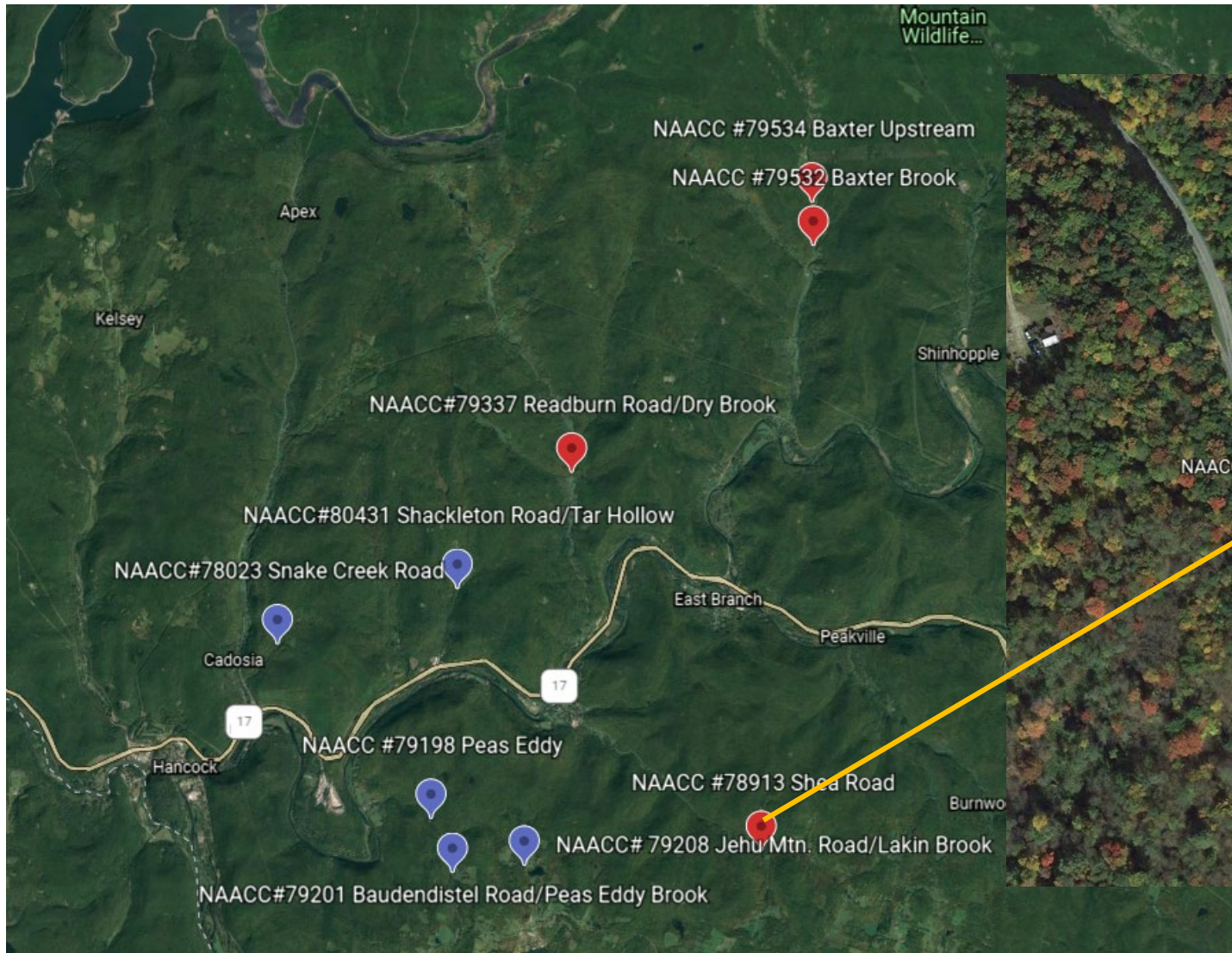
Find Money to Help Implement

**GET THE BEST
PROJECTS
DONE ON THE
GROUND TO
ACHIEVE
MANY
OBJECTIVES**

Prioritizing Road Stream Crossings



Prioritization - Results



NAACC #78913 Shea Road

Survey COMPLETE - Moderate barrier but in bad shape and a known high priority for the Town. Bedrock downstream is additional barrier and likely not passable. C(T) - 2.28 miles reconnected https://naacc.org/naacc_display_crossing.cfm?aqId=78913



Current Project – Fuller Brook, Tributary to East Branch Delaware River

- Town of Colchester
- Reconnect 0.92 miles
- Summer 2022 Installation
- Funding –
 - Delaware River Conservation Fund
 - Town Supported Match

NYSDEC/TU monitoring fish passage before and after



Current Project – Cooks Brook, tributary to Beaver Kill

- Town Of Colchester
- Reconnect 3.5 miles
- Summer 2022 Installation
- Funding – Delaware River Conservation Fund; NYS Water Quality Improvement Fund

Current Project – Hughes Brook, tributary to Little Delaware River

- Town Of Delhi
- Reconnect 1.93 miles
- Summer 2022 Installation

Funding – Delaware River Conservation Fund;
NYS Water Quality Improvement Fund





Current Project – Webster Brook, tributary to Little Delaware River

- Town Of Delhi
- Reconnect 1.8 miles
- Summer 2022 Installation
- Funding – Delaware River Conservation Fund



Project Team



Tracy Brown (TU) – Tracy.Brown@tu.org

Caroline Shepler (Shafer) (TU) – Caroline.Shafer@tu.org

Steve Swenson (NYS DEC) – steven.swenson@dec.ny.gov

Molly Oliver (FUDR) – molly@fudr.org