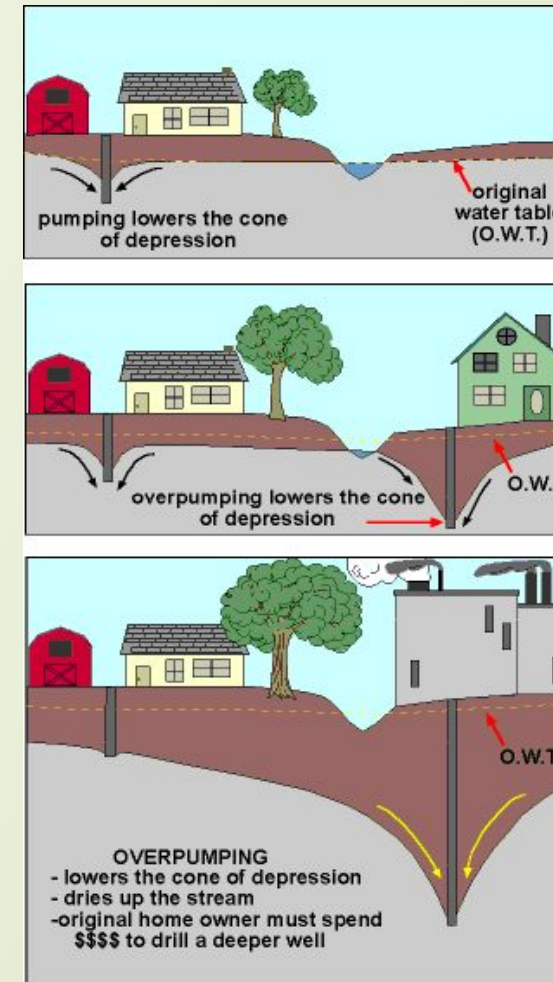




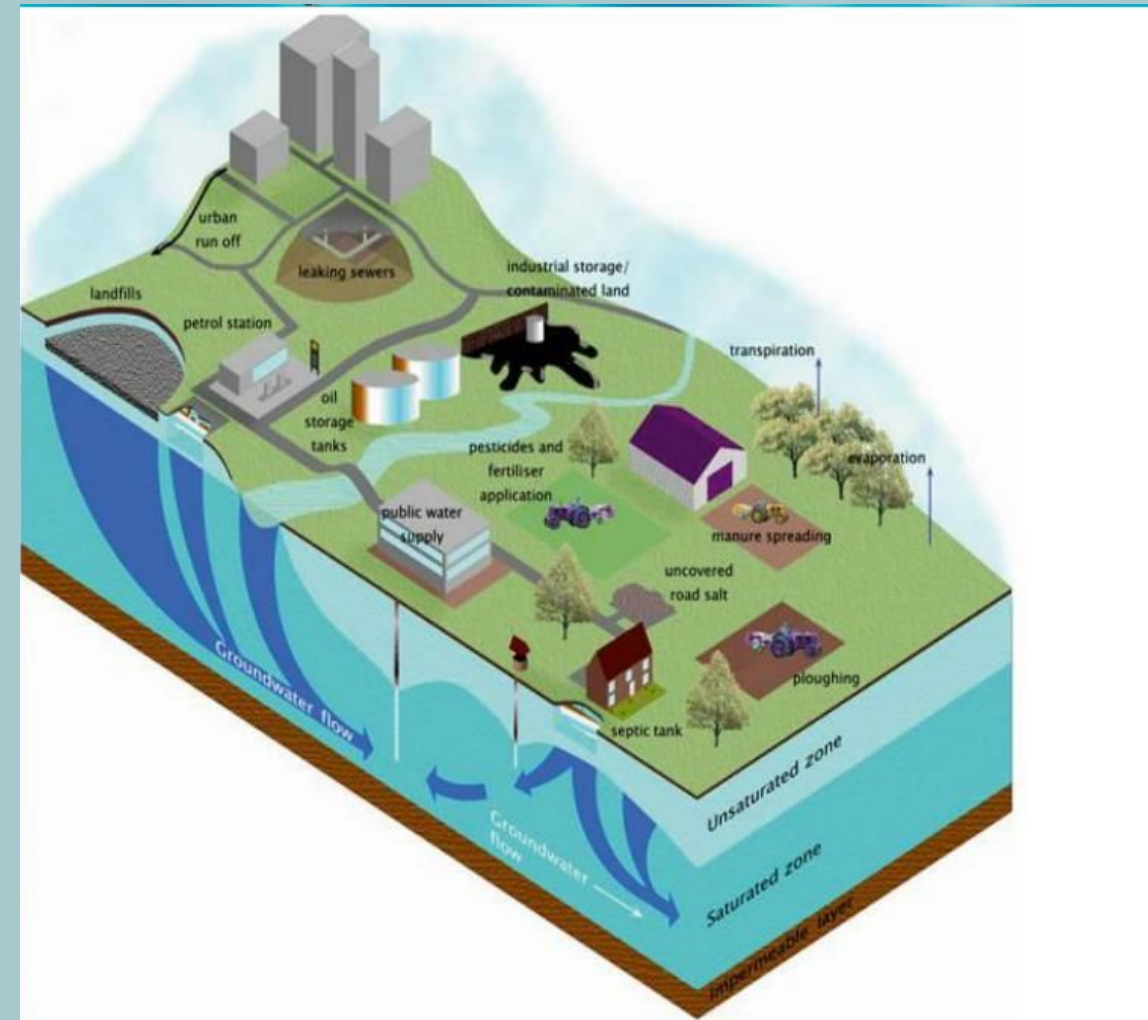
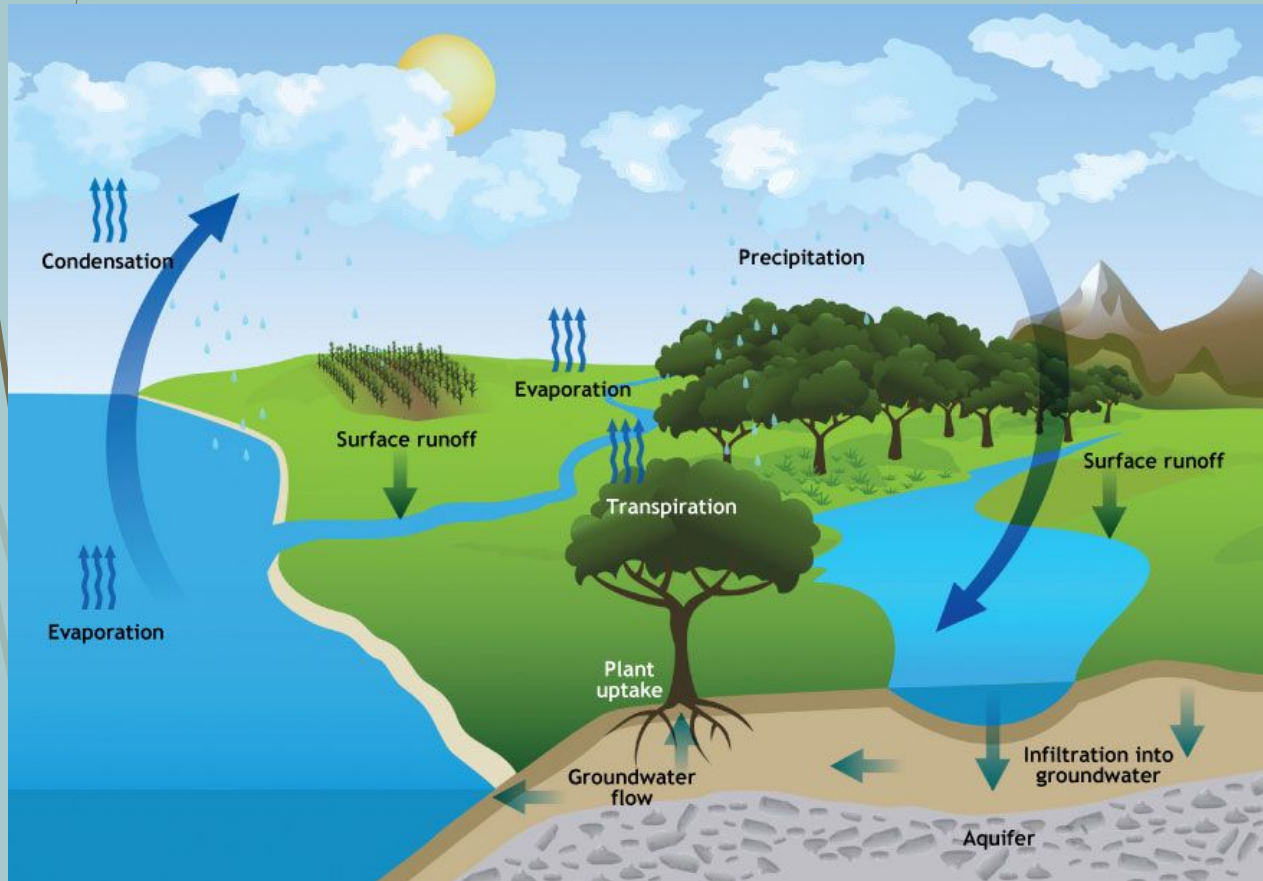
# Watershed Planning

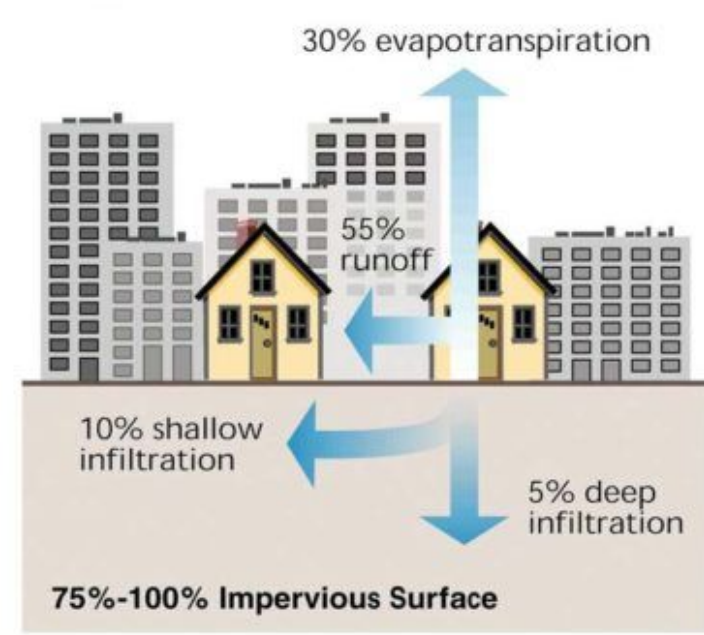
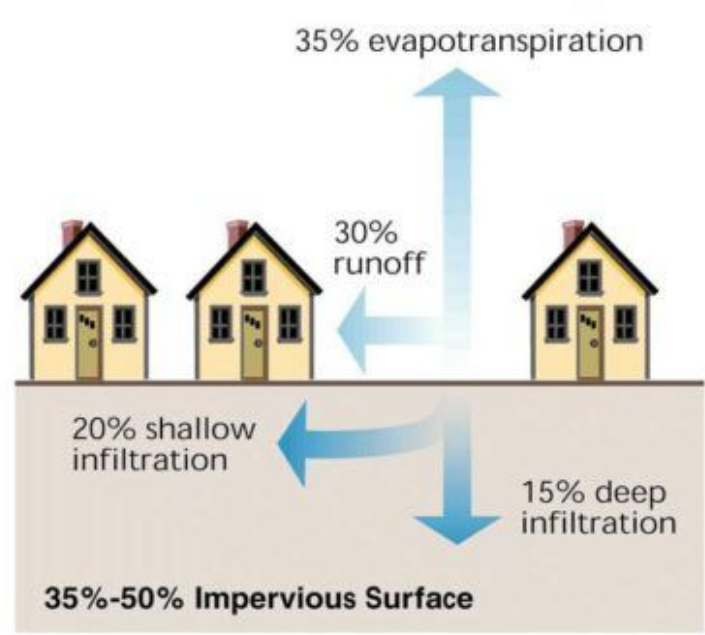
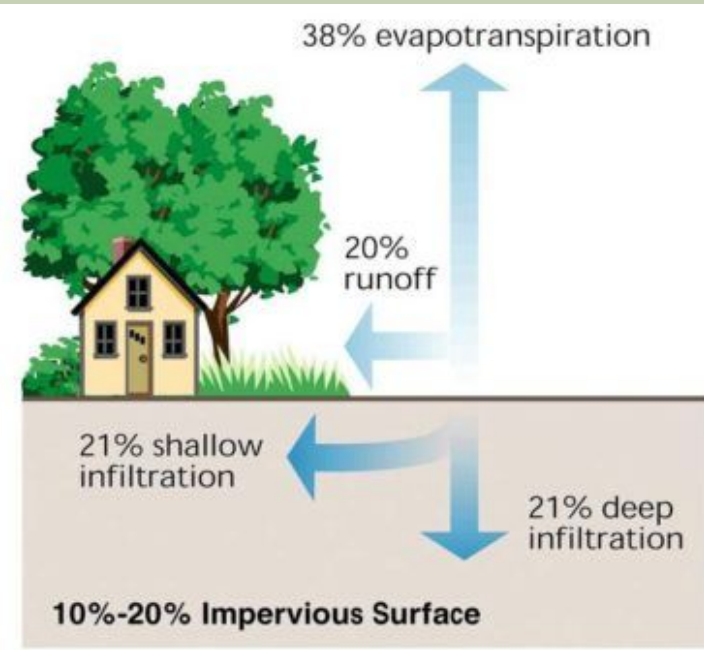
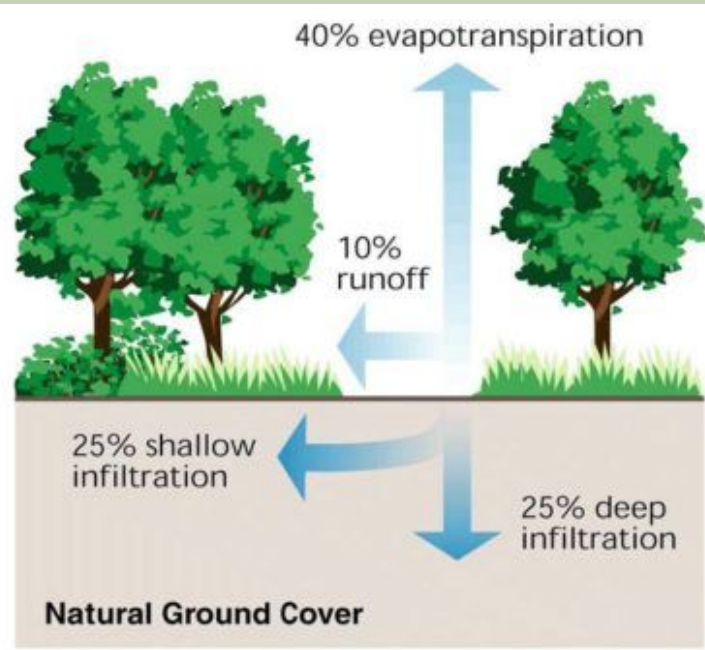
The Neversink Watershed Management Plan

Water does not care about lot lines, town borders, or county lines.



This is true for the entire water cycle







# Data collection and modelling has started



# Plan Components

- A. Executive Summary
- B. Background
- C. Vision Statement**
- D. Planning Process
- E. Description of Project Location
- F. Watershed Wide Goals**
- G. The O&W - Rail Lines and Stream Management
- H. Featured Sub-basins
- I. Implementation Plan
- J. Pilot Projects
- K. Stream Corridor Management Plan Recommendations**
- L. Project List**
- M. Appendices
  - a. Local Law and Planning Review
  - b. Community Input
  - c. Stream Project Implementation
  - d. Community Outreach Plan
  - e. Glossary
  - f. Works Cited



# Local Plans and Policy

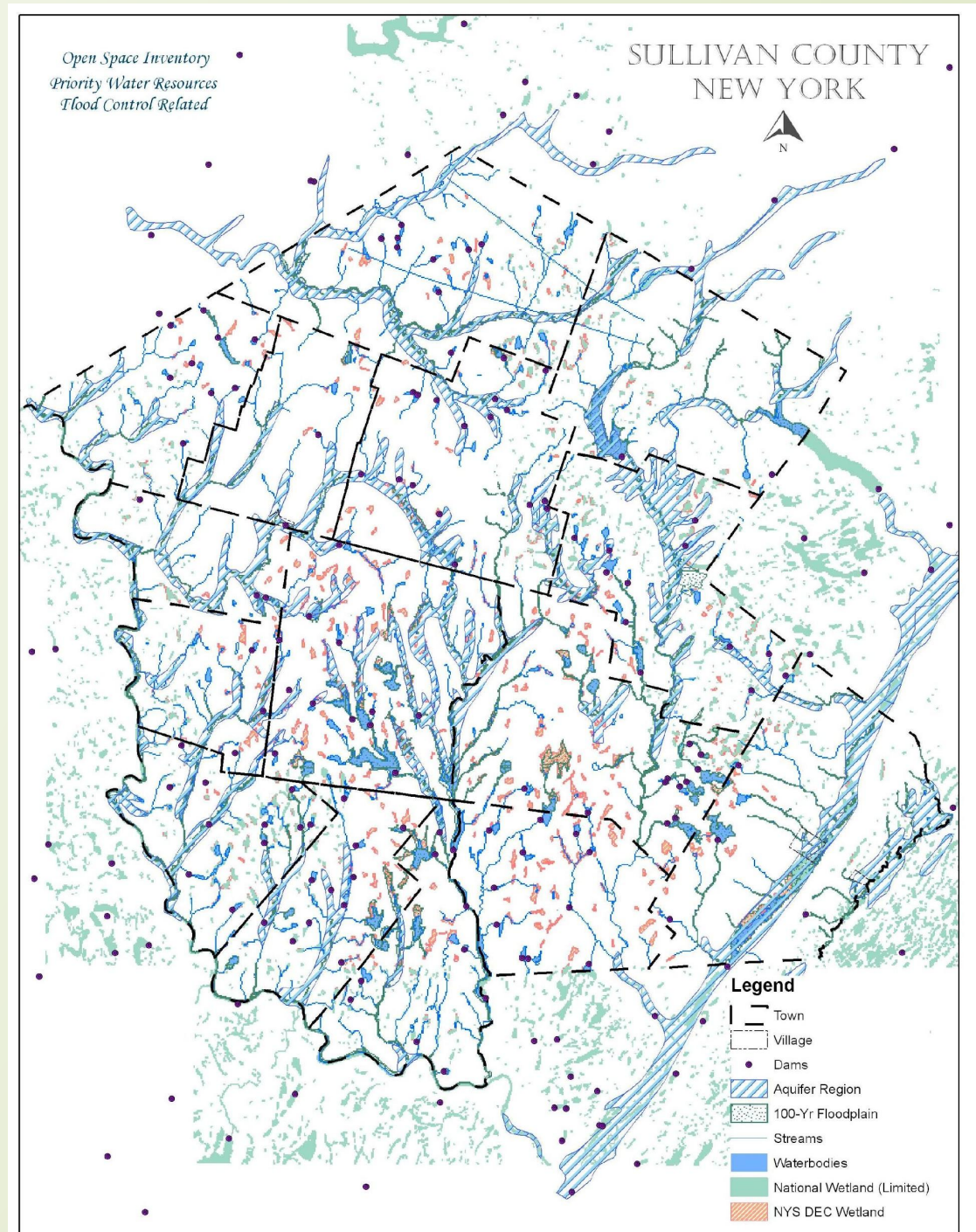
- Comprehensive Plan
- Open Space Plan
- Agriculture Plan
- Zoning





# County Plans and Policy

- Resiliency Plan
- Hazard Mitigation Plan
- GML 239 Reviews





# Funding



- Check out the U.S. “[DOT Fiscal Year \(FY\) 2023 Year Ahead Checklist](#)” to see how your community can get ready to successfully apply for the many discretionary grant programs that will release [Notice of Funding Opportunities](#) (NOFO) throughout the year.

If you are a local agency and interested in receiving a letter of support from MDOT, please fill out this [request form](#). We will need at least two full weeks upon receiving the information to route for signature.

Review the [Bipartisan Infrastructure Law Guidebook](#), which is a roadmap to the funding available under the law.



Thank You

[planning@sullivanny.us](mailto:planning@sullivanny.us)